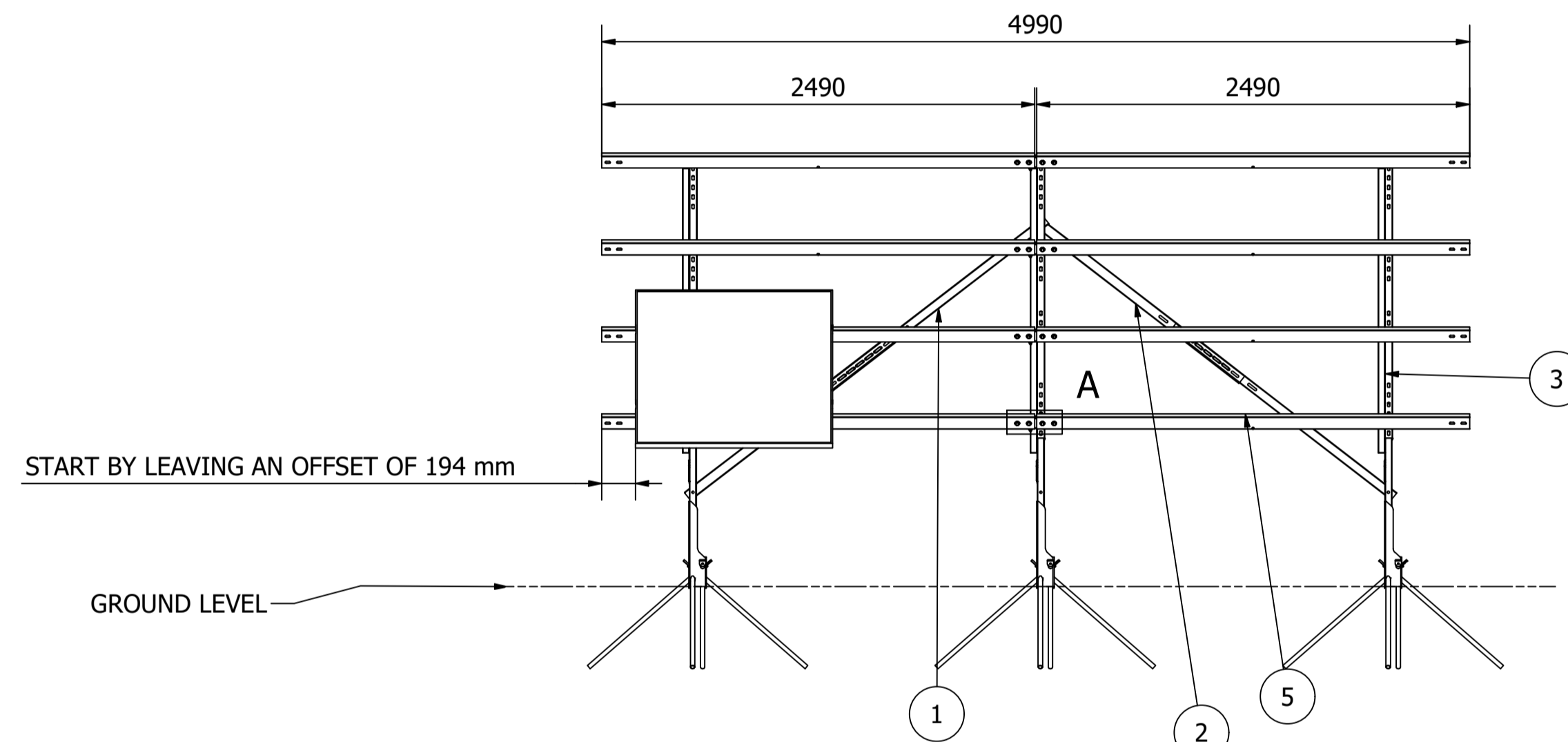
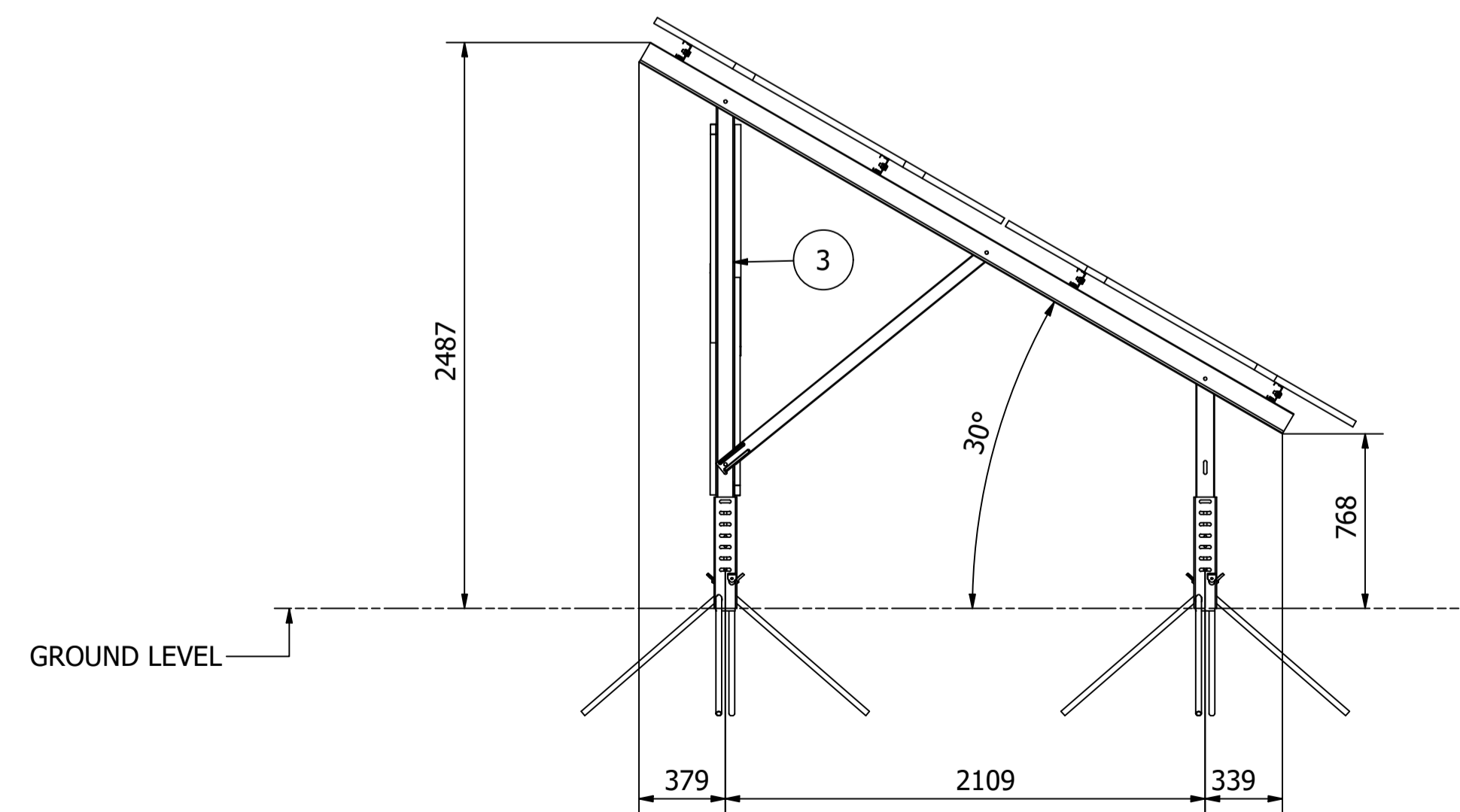


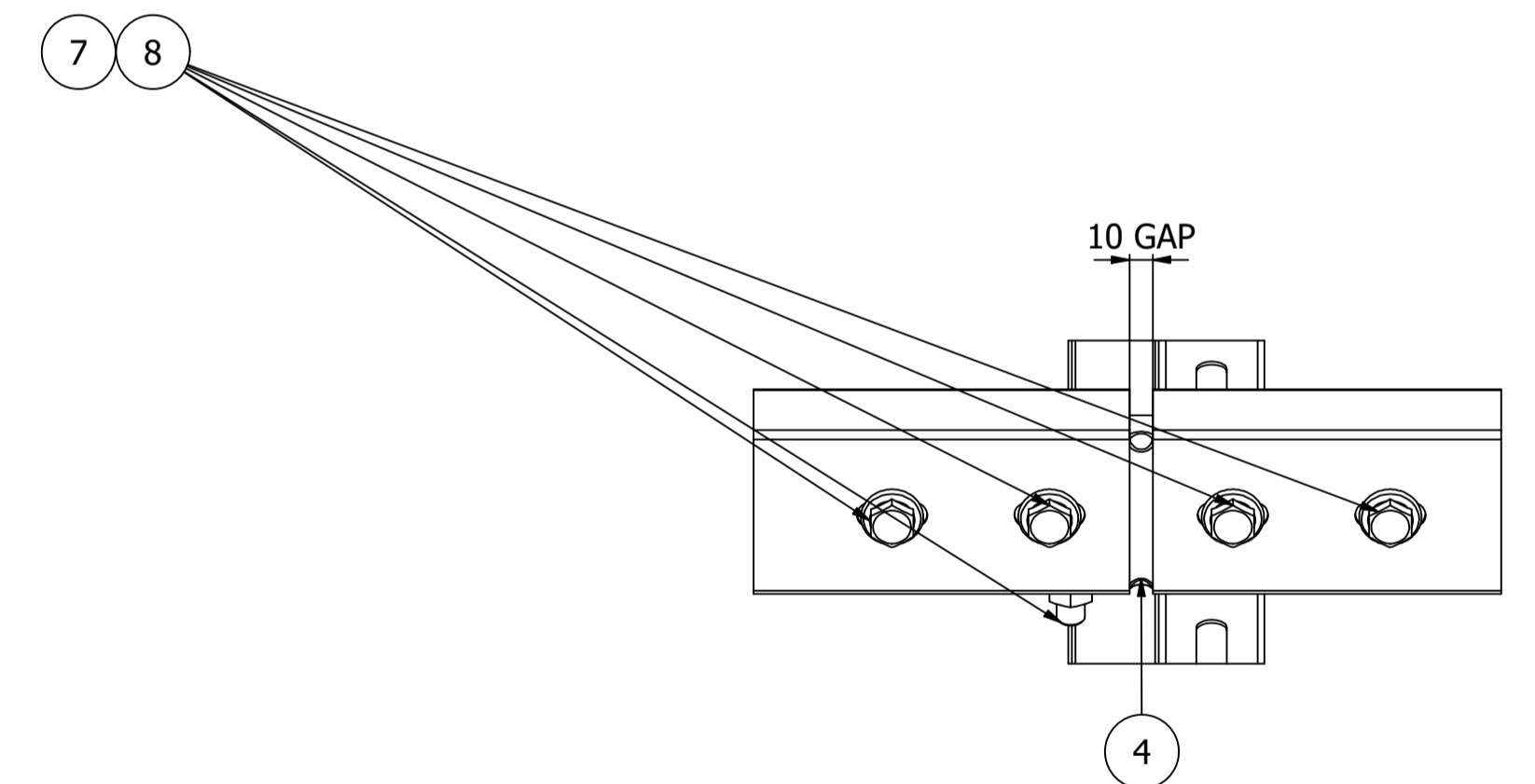
**PLAN VIEW**  
SHOWING PILE POSITIONS



**FRONT VIEW**  
SHOWING PURLIN POSITIONS



**SIDE VIEW**  
NOT TO SCALE  
SHOW UPRIGHT POSITIONS



**DETAILED VIEW A ( 1 : 3 )**  
TYP ALL POSNS

**IMPORTANT NOTE:**

- PANEL CLAMPING ZONE ADHERENCE IS THE RESPONSIBILITY OF INSTALLER PURLIN POSITION CAN BE ADJUSTED TO SUIT PANEL MANUFACTURER'S CLAMPING ZONE REFER TO THE PANEL MANUFACTURER SPECIFICATIONS FOR CLAMPING INFORMATION.
- DRAWING DOES NOT INCLUDE BRACINGS, PLEASE REFER TO THE INSTALLATION GUIDE.

PARTS LIST			
ITEM	QTY	PART NUMBER	DESCRIPTION
1	2	0000-WBR-003	Internal Wind Brace 51x29x1.45mm 1600L
2	2	0000-WBR-001	External Wind Brace 57x26x1.45mm 1500L
3	3	2 in P - UPA - ADS	
4	4	0000-JRC-105	GM COMMON JOINER 75x34x20x1.45 300L
5	8	1261-PUR-2490	GM PURLIN 80x40x1.45 2490L
6	8	2 In P - Solar Panel	
7	20	SPS - M12	Serrated Flange Nut
8	20	SPS - M12 x 26	Hexagon Serrated Flange Bolt

<b>All Dimensions are in Millimeters</b> For Drawing Requirements, Refer to W1-08.03.01 Design Manual Fabrication Structural Framework Designed I.A.W. EN 1991-1-4:2005+A1 Tolerances (U.O.S.): Linear ±2.0mm Angular ±1.0° Manufacturing Tolerances (U.O.S.): Material Lengths ±1.0mm Holes & Slots (Size and positioning) ±0.5mm Angular ±1.0° Design Code: EN 1990:2002+A1, EN 1991-1-4:2005+A1, Parts 1, 3 & 7 (Eurocodes)		Debur and Break all Sharp Edges 3x N/A IF IN DOUBT, ASK!	ECR No. N/A SOLARPORT Solarport Systems Ltd The Cove, Gore Cross Business Park Bridport Dorset DT6 3PH. T: +44 (0)1308 800 501 e: info@solarportsystems.com w: www.solarportsystems.com	Description of Change: First drawing, initial issue Date of Change: 13/05/2025 Drawn By: ME Checked By: ND	Title: 2x4 - X-anchor Drawing No. Modular Library Project No. M231261 Revision 1
Scale: 1 : 30 Sheet 1 of 1		<b>A1</b>			