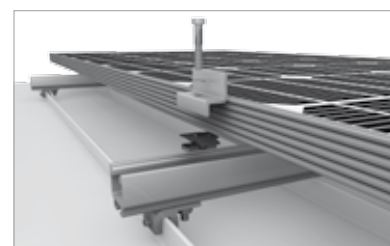
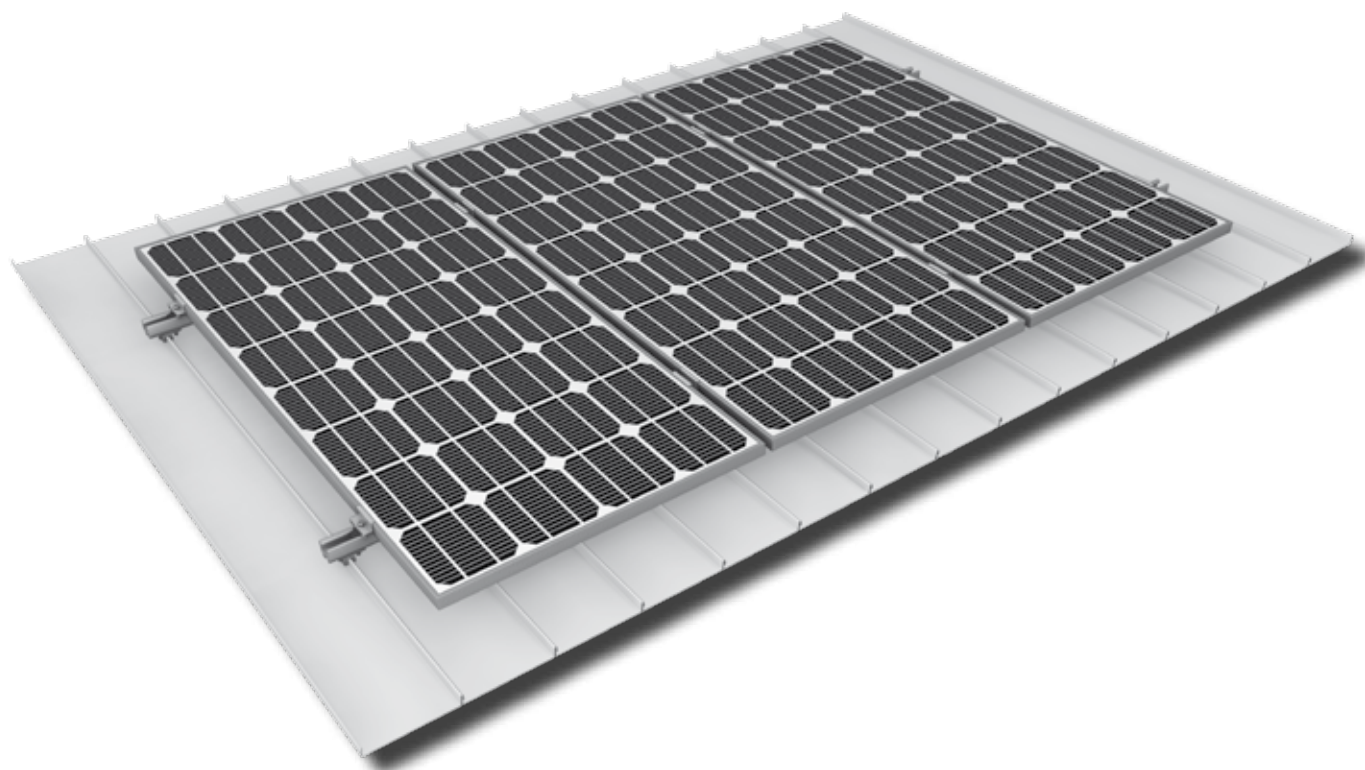


Mounting systems for solar technology



- S-51-Clamp for Standing Seams
- Prior to installing it is essential to check whether the standing seam can cope with the local snow-/wind loads and whether the expansion clips/cleats are allowed to receive clamping
- Set screw has to be tightened with an Allen key (wrench size: 3/16") with a tightening torque of 15 Nm.

MONTAGEANLEITUNG **SLOPED ROOF SYSTEMS** **SEAM METAL SYSTEM**

Mounting systems for solar technology



K2 Systems GmbH
Riedwiesenstraße 13 - 17
71229 Leonberg
Germany
Phone +49 (0) 7152 - 3560 - 0
Fax +49 (0) 7152 - 3560 - 179
info@k2-systems.de
www.k2-systems.com

K2 Systems SARL
19 Avenue du Pré de Challes
Parc des Glaisins
74940 Annecy le Vieux
France
Tel. +33 (0) 4 50 51 22 53
Fax +33 (0) 4 50 51 16 41
info@k2-systems.fr
www.k2-systems.fr

K2 Systems s.r.l.
Via Madonna dello Schioppo 67
Secondo Piano Int. 17 - 19
47521 Cesena (FC)
Italy
Tel. +39 0547 63 20 80
Fax +39 0547 63 50 22
info@k2-systems.it
www.k2-systems.it

Everest Solar Systems, LLC
3809 Ocean Ranch Blvd.
Suite 111
Oceanside, CA 92056
USA
Tel +1.760.301.5300
info@everest-solarsystems.com
www.everest-solarsystems.com

K2 Solar Mounting Solutions Ltd.
Unit 46 Easter Park
Benyon Road
Aldermaston, Berkshire RG 7 2PQ
United Kingdom
Tel. +44 (0) 1189 701280
info@k2-systems.uk.com
www.k2-systems.uk.com

Montageanleitung Blechfalz 55i | GB1 | 0613 | Änderungen vorbehalten
Produktabbildungen sind beispielhafte Abbildungen und können vom Original abweichen.

