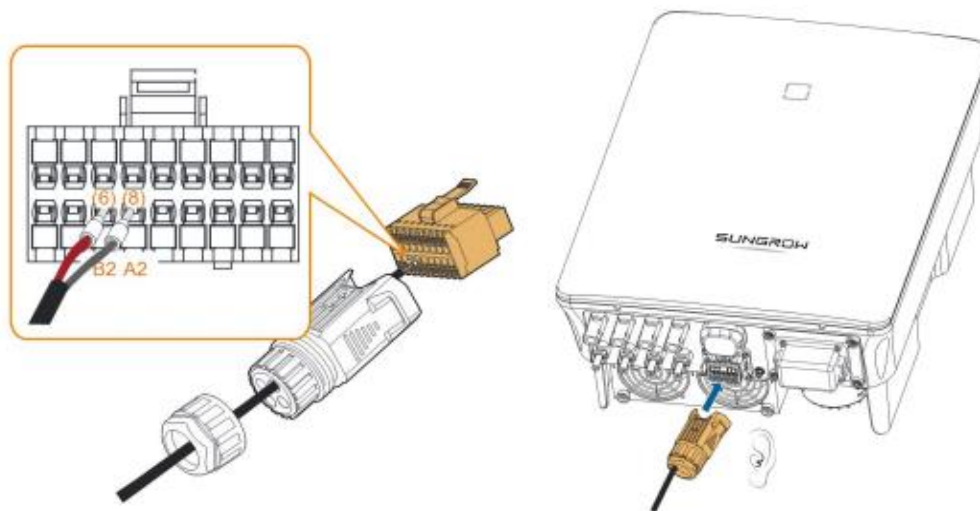


3-phase String Inverter-FAQ

How to connect smart meter

Applicable to: 3-phase string inverters

If you choose to connect a smart meter with your inverter, please follow the instructions below. Use **COM 2** terminal for the smart meter connection.



For further information, please download the user manual [here](#).

This manual is intended for professional technicians who are responsible for installation, operation, maintenance and troubleshooting of inverters, and users who need to check inverter parameters. The inverter must only be installed by professional technicians.

The professional technician is required to meet the following requirements:

- Know electronic, electrical wiring and mechanical expertise, and be familiar with electrical and mechanical schematics.
- Have received professional training related to the installation, commissioning and troubleshooting of electrical equipment.
- Be able to quickly respond to hazards or emergencies that occur during installation, commissioning and troubleshooting.
- Be familiar with local standards and relevant safety regulations of electrical systems.
- Read this manual thoroughly and understand the safety instructions related to operations.